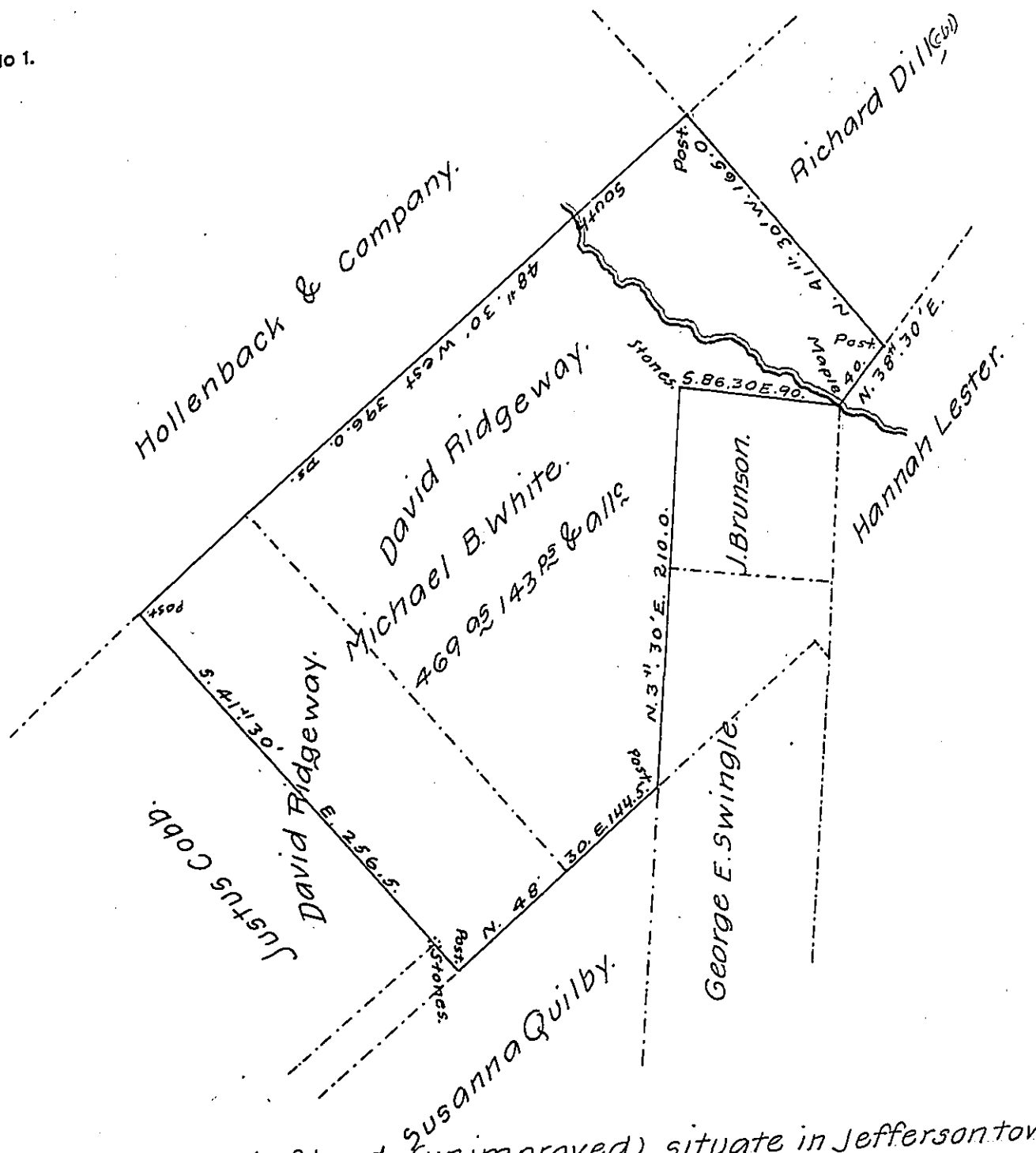


FORM NO 1.



Draft of a tract of land (unimproved) situate in Jefferson township Luzerne County, Pennsylvania adjoining lands in the warrant ^{name} of Justus Cobb on the south west, George E. Swingle and others on the south East and Hollenback and Company on the North West Containing 469 ^{ac} 143 ^{rs} & allowance of six percent for Roads &c.

Surveyed the above described tract of land to Michael B. White the 9th day of August 1872 in pursuance of his warrant dated 5th day of January 1872.

To Hon. Robert B. Beath } J. P. Weller
 Surveyor General. } County Surveyor.

Note. The above described tract of land covers in part the following tracts of land, viz: The tract.

IN TESTIMONY that the above is a copy of the original remaining on file in the Department of Internal Affairs of Pennsylvania, made conformably to an Act of Assembly approved the 16th day of February, 1833, I have hereunto set my Hand and caused the Seal of said Department to be affixed at Harrisburg, this twelfth day of June 1907.

Henry Howell
 Secretary of Internal Affairs.